



Who are we

ABOUT US

Founded in 2012, for 13 years and counting, we have been committed to sustainability, decarbonization, and creating a better tomorrow.

We constantly shoot for excellence in everything we do, which has been proved by our technology and quality with customer satisfaction worldwide.

TECHNICAL SERVICES

Our professional team consistently delivers cost efficiency alongside streamlined after-sale services and maintenance, ensuring the prime leveled cost of energy for every project.

It takes a team effort to ensure large-scale projects go off without a hitch. We have an expert team of R&D, process control management team, and well-experienced sales and after-sale team to guard the whole life circle of your project.

7+

In the TOP 20 list for 7 years and counting.

20+

Equipped with over 20 full-automatic production lines, advanced laser cutting machine and screw pile production lines.

100,000 Tons

Production base is located in Tianjin. Annual production capacity reaches 100,000 tons and in expanding.



CORPORATE HISTORY

Becoming the global model of technological excellence in photovoltaic mounting system industry, so that each and every bit of clean electricity shines with the light of technology and quality.

2012

Founded in Tianjin

2016

The first 20MW overseas project delivered

2018

5GW shipment milestone surpassed

2019

100,000 Tons production capacity reached

2020

10GW shipment milestone surpassed

2024

15GW shipment milestone surpassed
Hangzhou headquarters set up

2025

200,000 Tons production capacity new manufacturing base in building

OUR MISSION

More and more companies working together to move towards zero carbon will have a profound impact on the sustainable development of society as a whole. This will help promote the green upgrading of the industrial structure, drive the coordinated transformation of the upstream and downstream industrial chains, contribute substantively to the global response to climate change, and create a cleaner, healthier, and better home for future generations.



11

Global layout

China, Singapore, Japan, Malaysia,
Philippines, Thailand, Vietnam, France,
Spain, Italy, Ukraine

**GLOBAL
PRESENCE**


*To leave a green world
To future generations.*

GLOBAL PRESENCE



PRODUCTS

Taking sustainable development as our mission, we promote the ecological balance of the earth, and guard the natural home on which we depend through the deep integration of innovative technology and green practices.



ALL TERRAIN MOUNTING SYSTEM

MAIN STRUCTURE MATERIAL

HDG/ZAM

ACCESSORIES MATERIAL

Aluminum and Stainless steel

FOUNDATION ADAPTION

PHC/Ground screw/
Driven pile/Cast-in-place

WARRANTY

10 Yr Warranty, 25 Yr Life-span

MODULE TILT RANGE

0~60

GROUND CLEARANCE

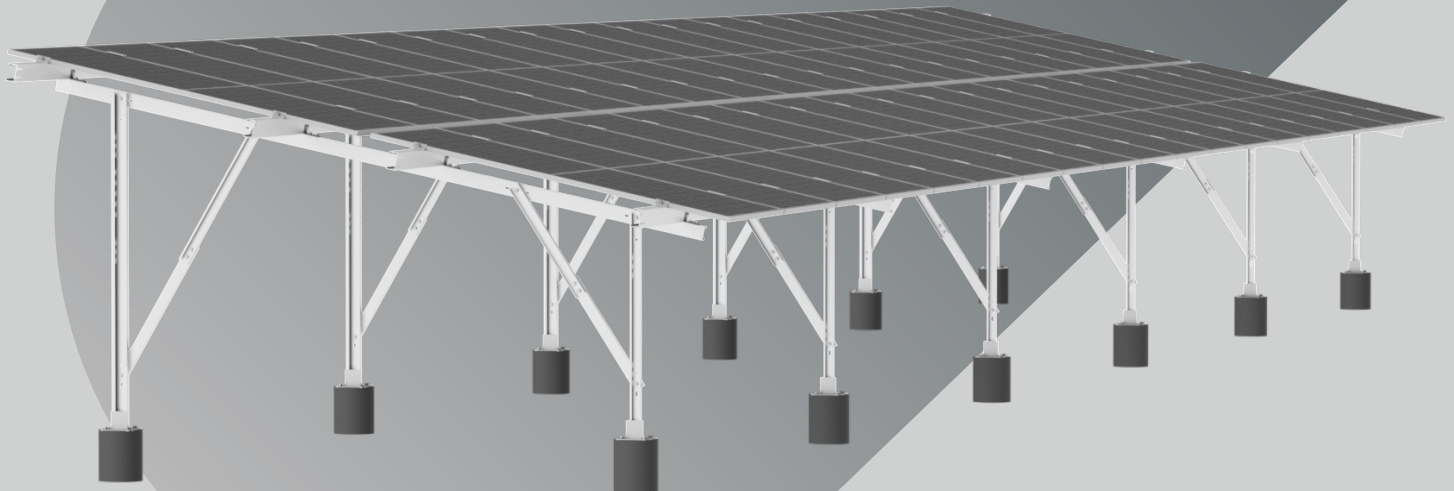
0.3~3m

N-S PIER SPACING

Up to 5m

E-W PIER SPACING

Up to 3m



COST-EFFECTIVE

Our professional engineering team can provide customized designs based on design standards with minimized steel used, to lower the cost from not only material cost but also transportation, installation manpower, and more.

EXTREME ENVIRONMENTS

Meet a variety of extreme meteorological conditions design, such as gale or heavy snow, high corrosion, and others. A variety of special terrain designs, such as sand, mountain, wetland, beach, and others. The design team will suggest the most adaptation solutions.

EASY-INSTALLATION

Simplified design of the main structural components, significantly reducing the number of components and no on-site drilling or welding. Under regular conditions, only takes 10 mins to install 1 kWp, and no heavy machinery required.

KEY FEATURES

Rugged construction
CE certified

Flexible architecture
25-year life-span

Spain
20MW



France
50MW



Vietnam
50MW



ROOFTOP MOUNTING SYSTEM

ALUMINUM SOLUTION

WATER DRAINAGE SYSTEM

Optional

ROOF TYPE ADAPTION

Color steel roof/tile roof/
Concrete roof

CE CERTIFICATE

PASS

WARRANTY

10 Yr Warranty, 25 Yr Life-span

ROOF PITCH

0~60

MAIN STRUCTURE MATERIAL

6005-T5 / 6063-T6

ACCESSORIES MATERIAL

Aluminum and
Stainless steel

ROOF FIXING SOLUTION

Self-tapping screw with
Waterproof solution /
Customized clamp or hook

STEEL SOLUTION

WATER DRAINAGE SYSTEM

Optional

ROOF TYPE ADAPTION

Color steel roof/tile roof/
Concrete roof

CE CERTIFICATE

PASS

WARRANTY

10 Yr Warranty, 25 Yr Life-span

ROOF PITCH

0~60

MAIN STRUCTURE MATERIAL

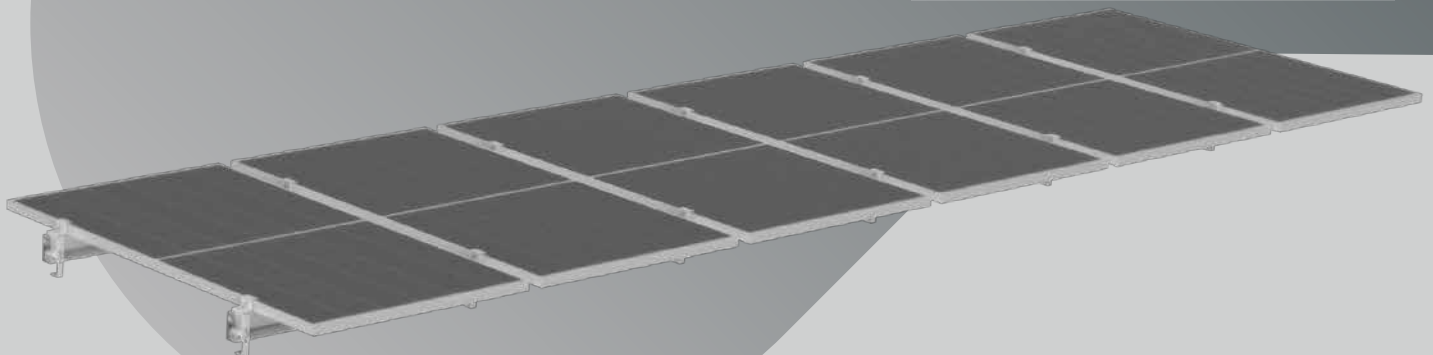
HDG / ZAM

ACCESSORIES MATERIAL

Aluminum and
Stainless steel

ROOF FIXING SOLUTION

Ballast block / Embedded bolt /
Chemical bolt



LIGHT WEIGHT

Under regular condition, the mounting system only weight 1 kg for every square meter (with aluminum solution), almost have no effect on roof bearing.

EASY INSTALLATION

Simplified design of the main structural components, significantly reducing the number of components and no on-site drilling or welding. Only takes 5 mins to install 1 kWp and no heavy machinery required.

ADAPTABILITY

Capable of meeting installation needs for various roof structures, designed to meet various types of special needs, for instance waterproofing, loading, lighting and others.

KEY FEATURES

- # Rugged construction
- # CE certified
- # Flexible architecture
- # 25-year life-span

Portugal
3.72MW



Vietnam
3MW



Singapore
1.55MW



INTEGRATED CARPORT

MAIN STRUCTURE MATERIAL

HDG/ZAM

ACCESSORIES MATERIAL

Aluminum and Stainless steel

ARRAY ARRANGEMENT

Single row mono-pitch/
Double row mono-pitch/
Double row duo-pitch

WARRANTY

10 Yr Warranty, 25 Yr Life-span

MODULE TILT RANGE

0~60

GROUND CLEARANCE

From 2.2m

PIER SPACING

2.5m ~ 7.5m

COLUMN FORM

π - frame / Y - frame
T - frame / V - frame



SPACE UTILIZATION

Carport systems combine minimum ground footprint with lightweight construction and a framework that allows unhindered opening of car doors. Vertical posts are positioned up to 7.5m apart with a typical 3-bay span.

ADDITIONAL OPTIONS

- # Powder coat finish
- # Cable management
- # Guttering management
- # Energy storage and EV charging

APPLICATION SCENARIOS

The perfect combination of photovoltaic power generation and carport is one of the applications of BIPV photovoltaic building integration. Through different column design forms, we provide a carport design appearance that adapts to various scenarios.

KEY FEATURES

- # Rugged construction
- # Flexible architecture
- # CE certified
- # 25-year life-span

Algeria
5.63MW



Bahrain
1.17MW

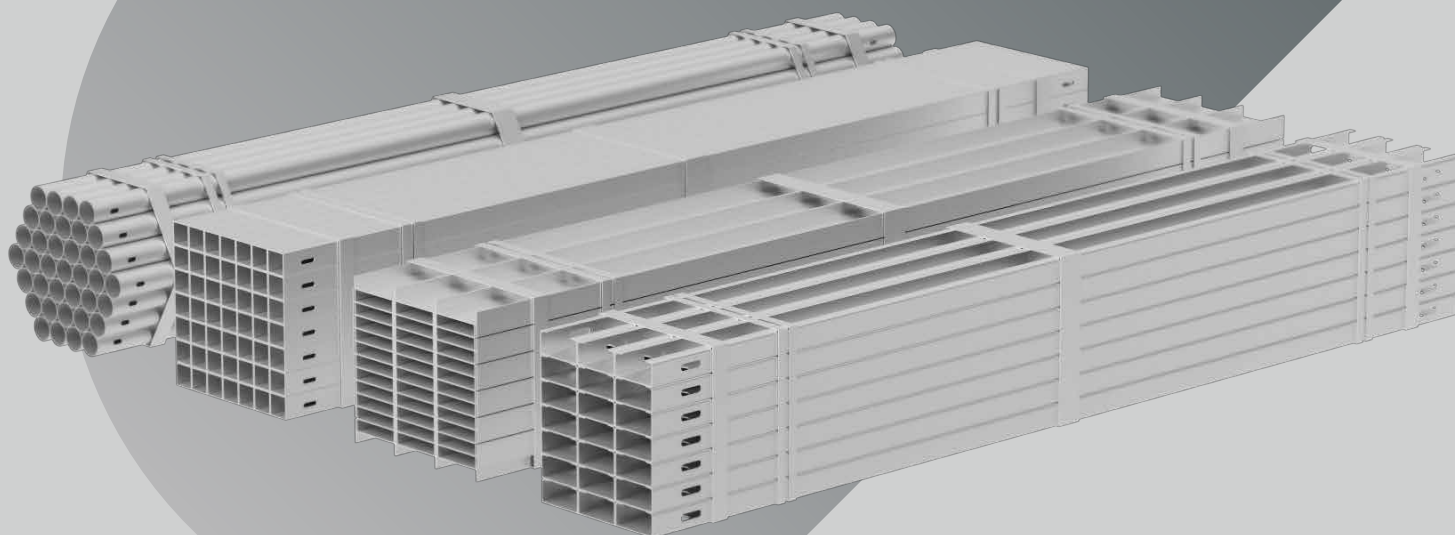


Italy
1.88MW



PROFILE STEEL PRODUCTION

SECTION TYPE	APPLICABLE STANDARD	SIZE RANGE	THICKNESS RANGE
CHS	EN 10219-2:2006	φ 21.3 ~ 76.3mm	2.0 ~ 5.0 mm
SHS	EN 10219-2:2006	□ 40~160 mm	2.0 ~ 16.0 mm
IPE	EN 10025-2:2004	H 80x46 ~ H 300x150	3.8/5.2 ~ 7.1/10.7 mm
L	EN 10056	L 25 ~ 80mm	3.0 ~ 12.0 mm
LNP	EN 10056	L 50x30 ~ L 100x75	4.0 ~ 11.0 mm
C-type		C 40 ~ 160 mm	1.5 ~ 3.0 mm
U-type		U 41x21 ~ 41x72 mm	1.6 ~ 2.5 mm



PRODUCTION CAPACITY

Annual production capacity reaches 100,000 tons. Equipped with over 20 full-automatic production lines, advanced laser cutting machine and screw pile production lines.

DELIVERY CAPACITY

With full production capacity, after PO signed, 1500 tons delivers at the first 15 days, and 3000 tons in every 10 days.

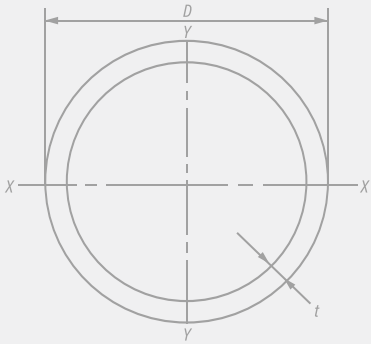
QUALITY CONTROL

We have formed a strictness closed loop of quality control system, from raw material incoming inspection, product inspection, galvanizing examine, to packing and transportation, till the products in your hands.

RAW MATERIAL

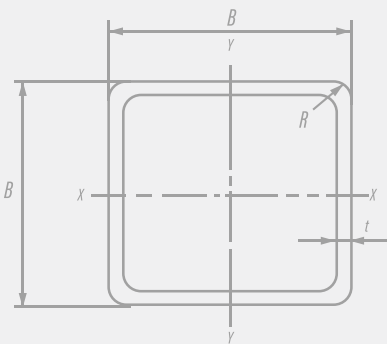
Cooperate with well-known international steel manufacturers, we can provide all kinds of raw materials to meet EU, ASTM and GB standards, also have full set of quality inspection report and warranty.

EN 10219-2:2006



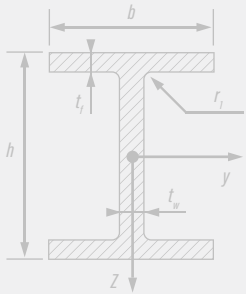
CHS	Diameter(mm) D	Thickness(mm) t
21.3	21.3	1.5 ~ 4.0
26.9	26.9	1.5 ~ 5.0
33.7	33.7	2.0 ~ 5.0
42.4	42.4	2.5 ~ 5.0
48.3	48.3	3.0 ~ 6.0
60.3	60.3	4.0 ~ 6.0
76.1	76.1	4.0 ~ 6.0

EN 10219-2:2006



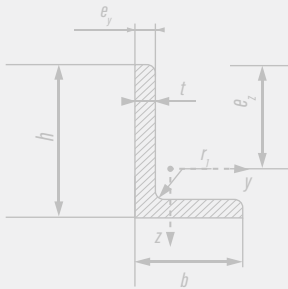
F	Height(mm) B	Thickness(mm) t
70	70	2.5 ~ 5.0
80	80	2.5 ~ 5.0
90	90	3.0 ~ 6.0
100	100	4.0 ~ 6.0
110	110	4.0 ~ 6.0
120	120	4.0 ~ 8.0
130	130	4.0 ~ 8.0

EN 10025-2:2004

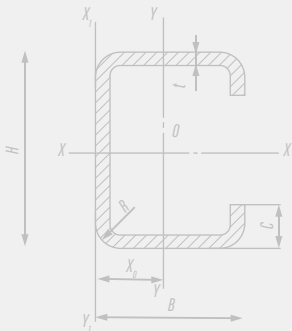


IPE	Height (mm)h	Width (mm)b	Thickness (mm)tw	Thickness (mm)tf
80	80	46	3.8	5.2
100	100	55	4.1	5.7
120	120	64	4.4	6.3
140	140	73	4.7	6.9
160	160	82	5	7.4
180	180	91	5.3	8
200	200	100	5.6	8.5

EN 10056



LNP	Height(mm) h	Width(mm) b	Thickness(mm) t
LNP50x30	50	30	4.0 ~ 5.0
LNP60x40	60	40	5.0 ~ 7.0
LNP75x50	75	50	6.0 ~ 7.0
LNP80x40	80	40	6.0 ~ 8.0
LNP90x60	90	60	6.0 ~ 8.0
LNP100x50	100	50	6.0 ~ 10.0
LNP100x65	100	65	7.0 ~ 11.0



C	Height(mm) H	Width(mm) B	Thickness(mm) t
50	150	20-50	1.5 ~ 2.75
60	150	20-60	1.5 ~ 2.75
70	150	20-60	1.5 ~ 2.75
80	175	20-60	1.5 ~ 2.75
90	175	20-60	1.5 ~ 2.75
100	200	20-60	1.5 ~ 2.75
110	200	20-60	1.5 ~ 2.75
120	200	20-60	1.5 ~ 2.75

GENERATE EACH AND EVERY BIT OF CLEAN ELECTRICITY SHINES
WITH THE LIGHT OF TECHNOLOGY AND QUALITY

E-MAIL: info@gbsolartech.com
ADDRESS: ROOM 13A05 JOYWARE BUILDING,
HANGZHOU CITY, ZHEJIANG PROVINCE, CHINA